

WELCOME TO ARLBERG



GENERAL INFORMATION

ARRIVAL	<p>YOU MAY ACCESS YOUR ROOM AFTER 2.00PM ON THE DAY OF ARRIVAL.</p> <p>SHOULD YOU ARRIVE BEFORE THIS TIME, PLEASE LEAVE YOUR LUGGAGE DOWNSTAIRS IN THE SKI ROOM AREA.</p> <p>PLEASE REFER TO THE PIN BOARD AT THE TOP OF THE FIRST SET OF STAIRS FOR YOUR ROOM ALLOCATION.</p> <p>IF YOU ARE ARRIVING ON SUNDAY, WELCOME GLUWEIN AND APERTIFS WILL BE SERVED AT 6.00PM.</p>
DEPARTURE	<p>PLEASE VACATE YOUR ROOM BY 9.30AM.</p> <p>PLEASE STRIP YOUR BEDS, REMOVING DOONA COVERS, AND TAKE LINEN AND TOWELS DOWNSTAIRS TO THE LAUNDRY.</p> <p>IF YOU ARE LEAVING AFTER 9.30AM, PLEASE LEAVE LUGGAGE DOWNSTAIRS IN THE SKI ROOM AREA SO THAT MANAGERS CAN CARRY ON WITH CLEANING THE LODGE.</p>
MEAL TIMES	<p>HOT BREAKFAST 8.00AM - 8.30AM</p> <p>LUNCH 11.30AM - 1.30PM</p> <p>DINNER 6.30PM</p> <p>CHILDREN ARE ASKED TO ASSIST WITH THE SETTING OF TABLES AND THE SERVING OF DINNER</p>
TRANSPORT	<p>WE RECOMMEND YOU BOOK YOUR OUTGOING TRANSPORT AT THE CHARLOTTE PASS VILLAGE SKI CENTRE EARLY IN YOUR STAY TO AVOID MISSING YOUR PREFERRED DEPARTURE TIME</p>
SKI PACKAGES	<p>IF YOU HAVE PRE-PURCHASED YOUR LIFT TICKETS AND/OR SKI HIRE, THEY WILL BE AVAILABLE FOR COLLECTION FROM THE CHARLOTTE PASS VILLAGE SKI CENTRE</p>
SKI BOOTS	<p>OUTSIDE FOOTWEAR MUST NOT BE WORN ON THE CARPETED AREAS OF THE LODGE</p>
NO SMOKING	<p>ARLBERG LODGE HAS A NO SMOKING POLICY.</p> <p>PLEASE DO NOT SMOKE IN THE LODGE. YOU MAY SMOKE ON THE DECK.</p> <p>WHEN OUT ON THE SLOPES, PLEASE PROTECT THE ENVIRONMENT AND DISPOSE OF YOUR BUTTS IN BINS AROUND THE LODGE AND RESORT.</p>
CROSS COUNTRY SKIING	<p>OUTSIDE FOOTWEAR MUST NOT BE WORN ON THE CARPETED AREAS OF THE LODGE.</p>
SAFETY	<p>PLEASE ENSURE ALL YOUR BINDINGS HAVE BEEN CHECKED BY COMPETENT PEOPLE OR BY THE CHARLOTTE PASS SKI CENTRE.</p>

ENTRY LEVEL

LAUNDRY	<p>OPEN FROM 9.00AM</p> <p>COLD WATER ONLY AFTER 1.00PM</p>
DRYING ROOM	<p>ACCESS VIA THE LAUNDRY FOR ALL WET CLOTHING AND SKI BOOTS. PLEASE REMOVE YOUR GARMENTS FROM THE DRYING ROOM WHEN DRIED. PLEASE DO NOT USE BEDROOM HEATERS TO DRY CLOTHING.</p>
SPA & SAUNA OPEN HOURS: STRICTLY 4PM - 6.30PM	<p>PLEASE SHOWER AND REMOVE ALL COSMETICS AND SUN SCREEN BEFORE USING THE SPA.</p> <p>CHILDREN UNDER 14 YEARS MUST BE SUPERVISED BY AN ADULT AT ALL TIMES.</p> <p>PLEASE DO NOT TAKE ALCOHOL OR GLASS BOTTLES INTO THE SPA AND SAUNA AREA.</p> <p>IF YOU ARE THE LAST PERSON TO LEAVE THE SPA, PLEASE TURN OFF THE BLOWERS, REPLACE THE POOL BLANKET AND TURN OFF THE SAUNA AND LIGHTS.</p>
SKI WAX ROOM	<p>ACCESS IS OUTSIDE AT THE BOTTOM OF THE FRONT ENTRY STAIRS.</p> <p>PLEASE LEAVE CLEAN AND TIDY AFTER USE.</p>

LEVELS 2 & 3 - LOUNGE AREA, BEDROOMS & PLAY LOFT

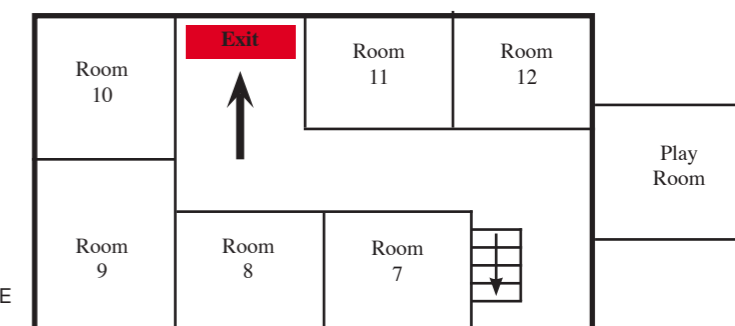
LOUNGE AREA	<p>TEA, COFFEE, MILO AND CORDIAL ARE AVAILABLE IN THE LOUNGE BAR AND KITCHEN AREA.</p> <p>IT IS THE RESPONSIBILITY OF MEMBERS AND GUESTS TO KEEP THIS AREA CLEAN AND TIDY.</p> <p>PLEASE STACK DIRTY CUPS AND GLASSES IN TRAYS AND TAKE FULL TRAYS TO THE KITCHEN FOR CLEANING.</p> <p>THE LAST PERSON TO LEAVE THE LOUNGE ROOM AT NIGHT TURNS OFF THE LIGHTS AND STEREO.</p>
WOOD FIRE	<p>THE CLUB CAPTAIN (OR HIS/HER NOMINEE) IS RESPONSIBLE FOR LIGHTING THE FIRE EACH DAY, USUALLY AROUND 5.00PM.</p> <p>IT IS THE DUTY OF MEMBERS AND GUESTS TO RESTOCK THE WOODPILE FOR THE FOLLOWING WEEK.</p>
BEDROOMS	<p>YOU WILL FIND LINEN IN YOUR ROOM TO MAKE UP YOUR BED ON ARRIVAL.</p> <p>WE DO NOT HAVE KEYS TO THE BEDROOMS, SO THEY ARE UNLOCKED. WE HAVE NEVER EXPERIENCED ANY ISSUES REGARDING SECURITY, BUT IF YOU ARE CONCERNED, PLEASE KEEP VALUABLE ITEMS WITH YOU.</p> <p>PLEASE SWITCH OFF YOUR HEATER WHEN YOU LEAVE THE ROOM.</p>
TOILETS	<p>PLEASE PLACE FOREIGN MATTER AND FEMININE HYGIENE PRODUCTS IN THE BINS PROVIDED AND NOT IN TOILETS AS THEY WILL CAUSE BLOCKAGES.</p>
CHILDREN'S BED TIME	<p>CHILDREN AGED 12 YEARS AND UNDER SHOULD BE IN THEIR ROOMS BY 8.30PM EACH NIGHT.</p>
NOISE	<p>PLEASE CONSIDER THE COMFORT OF OUR OTHER GUESTS BY ENSURING THAT NOISE IS KEPT TO A MINIMUM LATE AT NIGHT</p>
GUESTS PHONE	<p>MEMBERS/ GUESTS TELEPHONE NUMBER IS (02) 6457 5481</p> <p>THE PHONE IS LOCATED IN THE LOUNGE ROOM KITCHEN. TELEPHONE CARDS ARE AVAILABLE FROM THE SHOP IN THE KOSCIUSKI CHALET</p>
INTERNET	<p>WiFi IS AVAILABLE THROUGHOUT THE LODGE.</p> <p>PLEASE SEE THE MANAGERS FOR INFORMATION ABOUT ACCESS.</p>
LIQUOR	<p>LIQUOR ORDERS CAN BE COLLECTED FROM THE CLUB CAPTAIN IN THE CELLAR AREA AT 5.30PM ON THE DAY OF ARRIVAL. YOU MAY ALSO BUY ALCOHOL FROM THE KOSCIUSZKO CHALET.</p>
PLAY LOFT	<p>MEMBERS AND GUESTS ARE RESPONSIBLE FOR TIDYING THE PLAY LOFT ONCE YOUR CHILDREN HAVE FINISHED PLAYING. PLEASE TURN LIGHTS OFF BEFORE BED.</p>

EMERGENCY EVACUATION PROCEDURE

In case of fire, leave the lodge via the closest fire exit. Gather down outside TarGanGil Lodge (between Arlberg and base of chairlift) and please wait there for roll call.

PLEASE MAKE YOURSELF FAMILIAR WITH THE LOCATION OF THE FIRE EXITS AND EVACUATION PROCEDURE ON ARRIVAL AT ARLBERG SKI LODGE

Please Note: THE FIRE EXITS MUST ONLY BE USED IN CASE OF EMERGENCIES. NORMAL ENTRY AND EXIT IS VIA THE TILED AREA ON THE GROUND FLOOR WHICH IS EQUIPPED WITH MUD AND SNOW REMOVAL FACILITIES



Have fun and enjoy your stay at Arlberg! Feel free to speak with Staff or the Club Captain if you have any questions or problems during your stay.

WELCOME TO ARLBERG



GENERAL INFORMATION

ARRIVAL	<p>YOU MAY ACCESS YOUR ROOM AFTER 2.00PM ON THE DAY OF ARRIVAL.</p> <p>SHOULD YOU ARRIVE BEFORE THIS TIME, PLEASE LEAVE YOUR LUGGAGE DOWNSTAIRS IN THE SKI ROOM AREA.</p> <p>PLEASE REFER TO THE PIN BOARD AT THE TOP OF THE FIRST SET OF STAIRS FOR YOUR ROOM ALLOCATION.</p> <p>IF YOU ARE ARRIVING ON SUNDAY, WELCOME GLUWEIN AND APERTIFS WILL BE SERVED AT 6.00PM.</p>
DEPARTURE	<p>PLEASE VACATE YOUR ROOM BY 9.30AM.</p> <p>PLEASE STRIP YOUR BEDS, REMOVING DOONA COVERS, AND TAKE LINEN AND TOWELS DOWNSTAIRS TO THE LAUNDRY.</p> <p>IF YOU ARE LEAVING AFTER 9.30AM, PLEASE LEAVE LUGGAGE DOWNSTAIRS IN THE SKI ROOM AREA SO THAT MANAGERS CAN CARRY ON WITH CLEANING THE LODGE.</p>
MEAL TIMES	<p>HOT BREAKFAST 8.00AM - 8.30AM</p> <p>LUNCH 11.30AM - 1.30PM</p> <p>DINNER 6.30PM</p> <p>CHILDREN ARE ASKED TO ASSIST WITH THE SETTING OF TABLES AND THE SERVING OF DINNER</p>
TRANSPORT	<p>WE RECOMMEND YOU BOOK YOUR OUTGOING TRANSPORT AT THE CHARLOTTE PASS VILLAGE SKI CENTRE EARLY IN YOUR STAY TO AVOID MISSING YOUR PREFERRED DEPARTURE TIME</p>
SKI PACKAGES	<p>IF YOU HAVE PRE-PURCHASED YOUR LIFT TICKETS AND/OR SKI HIRE, THEY WILL BE AVAILABLE FOR COLLECTION FROM THE CHARLOTTE PASS VILLAGE SKI CENTRE</p>
SKI BOOTS	<p>OUTSIDE FOOTWEAR MUST NOT BE WORN ON THE CARPETED AREAS OF THE LODGE</p>
NO SMOKING	<p>ARLBERG LODGE HAS A NO SMOKING POLICY.</p> <p>PLEASE DO NOT SMOKE IN THE LODGE. YOU MAY SMOKE ON THE DECK.</p> <p>WHEN OUT ON THE SLOPES, PLEASE PROTECT THE ENVIRONMENT AND DISPOSE OF YOUR BUTTS IN BINS AROUND THE LODGE AND RESORT.</p>
CROSS COUNTRY SKIING	<p>OUTSIDE FOOTWEAR MUST NOT BE WORN ON THE CARPETED AREAS OF THE LODGE.</p>
SAFETY	<p>PLEASE ENSURE ALL YOUR BINDINGS HAVE BEEN CHECKED BY COMPETENT PEOPLE OR BY THE CHARLOTTE PASS SKI CENTRE.</p>

ENTRY LEVEL

LAUNDRY	<p>OPEN FROM 9.00AM</p> <p>COLD WATER ONLY AFTER 1.00PM</p>
DRYING ROOM	<p>ACCESS VIA THE LAUNDRY FOR ALL WET CLOTHING AND SKI BOOTS. PLEASE REMOVE YOUR GARMENTS FROM THE DRYING ROOM WHEN DRIED. PLEASE DO NOT USE BEDROOM HEATERS TO DRY CLOTHING.</p>
SPA & SAUNA OPEN HOURS: STRICTLY 4PM - 6.30PM	<p>PLEASE SHOWER AND REMOVE ALL COSMETICS AND SUN SCREEN BEFORE USING THE SPA.</p> <p>CHILDREN UNDER 14 YEARS MUST BE SUPERVISED BY AN ADULT AT ALL TIMES.</p> <p>PLEASE DO NOT TAKE ALCOHOL OR GLASS BOTTLES INTO THE SPA AND SAUNA AREA.</p> <p>IF YOU ARE THE LAST PERSON TO LEAVE THE SPA, PLEASE TURN OFF THE BLOWERS, REPLACE THE POOL BLANKET AND TURN OFF THE SAUNA AND LIGHTS.</p>
SKI WAX ROOM	<p>ACCESS IS OUTSIDE AT THE BOTTOM OF THE FRONT ENTRY STAIRS.</p> <p>PLEASE LEAVE CLEAN AND TIDY AFTER USE.</p>

LEVELS 2 & 3 - LOUNGE AREA, BEDROOMS & PLAY LOFT

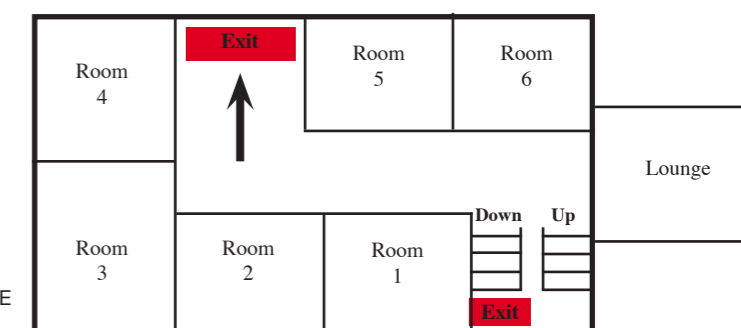
LOUNGE AREA	<p>TEA, COFFEE, MILO AND CORDIAL ARE AVAILABLE IN THE LOUNGE BAR AND KITCHEN AREA.</p> <p>IT IS THE RESPONSIBILITY OF MEMBERS AND GUESTS TO KEEP THIS AREA CLEAN AND TIDY.</p> <p>PLEASE STACK DIRTY CUPS AND GLASSES IN TRAYS AND TAKE FULL TRAYS TO THE KITCHEN FOR CLEANING.</p> <p>THE LAST PERSON TO LEAVE THE LOUNGE ROOM AT NIGHT TURNS OFF THE LIGHTS AND STEREO.</p>
WOOD FIRE	<p>THE CLUB CAPTAIN (OR HIS/HER NOMINEE) IS RESPONSIBLE FOR LIGHTING THE FIRE EACH DAY, USUALLY AROUND 5.00PM.</p> <p>IT IS THE DUTY OF MEMBERS AND GUESTS TO RESTOCK THE WOODPILE FOR THE FOLLOWING WEEK.</p>
BEDROOMS	<p>YOU WILL FIND LINEN IN YOUR ROOM TO MAKE UP YOUR BED ON ARRIVAL.</p> <p>WE DO NOT HAVE KEYS TO THE BEDROOMS, SO THEY ARE UNLOCKED. WE HAVE NEVER EXPERIENCED ANY ISSUES REGARDING SECURITY, BUT IF YOU ARE CONCERNED, PLEASE KEEP VALUABLE ITEMS WITH YOU.</p> <p>PLEASE SWITCH OFF YOUR HEATER WHEN YOU LEAVE THE ROOM.</p>
TOILETS	<p>PLEASE PLACE FOREIGN MATTER AND FEMININE HYGIENE PRODUCTS IN THE BINS PROVIDED AND NOT IN TOILETS AS THEY WILL CAUSE BLOCKAGES.</p>
CHILDREN'S BED TIME	<p>CHILDREN AGED 12 YEARS AND UNDER SHOULD BE IN THEIR ROOMS BY 8.30PM EACH NIGHT.</p>
NOISE	<p>PLEASE CONSIDER THE COMFORT OF OUR OTHER GUESTS BY ENSURING THAT NOISE IS KEPT TO A MINIMUM LATE AT NIGHT</p>
GUESTS PHONE	<p>MEMBERS/ GUESTS TELEPHONE NUMBER IS (02) 6457 5481</p> <p>THE PHONE IS LOCATED IN THE LOUNGE ROOM KITCHEN. TELEPHONE CARDS ARE AVAILABLE FROM THE SHOP IN THE KOSCIUSKI CHALET</p>
INTERNET	<p>WiFi IS AVAILABLE THROUGHOUT THE LODGE.</p> <p>PLEASE SEE THE MANAGERS FOR INFORMATION ABOUT ACCESS.</p>
LIQUOR	<p>LIQUOR ORDERS CAN BE COLLECTED FROM THE CLUB CAPTAIN IN THE CELLAR AREA AT 5.30PM ON THE DAY OF ARRIVAL. YOU MAY ALSO BUY ALCOHOL FROM THE KOSCIUSZKO CHALET.</p>
PLAY LOFT	<p>MEMBERS AND GUESTS ARE RESPONSIBLE FOR TIDYING THE PLAY LOFT ONCE YOUR CHILDREN HAVE FINISHED PLAYING. PLEASE TURN LIGHTS OFF BEFORE BED.</p>

EMERGENCY EVACUATION PROCEDURE

In case of fire, leave the lodge via the closest fire exit. Gather down outside TarGanGil Lodge (between Arlberg and base of chairlift) and please wait there for roll call.

PLEASE MAKE YOURSELF FAMILIAR WITH THE LOCATION OF THE FIRE EXITS AND EVACUATION PROCEDURE ON ARRIVAL AT ARLBERG SKI LODGE

Please Note: THE FIRE EXITS MUST ONLY BE USED IN CASE OF EMERGENCIES. NORMAL ENTRY AND EXIT IS VIA THE TILED AREA ON THE GROUND FLOOR WHICH IS EQUIPPED WITH MUD AND SNOW REMOVAL FACILITIES



Have fun and enjoy your stay at Arlberg! Feel free to speak with Staff or the Club Captain if you have any questions or problems during your stay.